

INDUSTRIAL GRINDER 1827 HIGH VOLUME | QUICK GUIDE

Hemro International AG Thurgauerstrasse 80 | 8050 Zurich, Switzerland
T: +41 44 864 18 00 | F: +41 44 864 18 01 info@hemrogroup.com | www.hemrogroup.com

ditting

www.dittingswiss.ch

Detailed information at:

Product Page



https://hemro.net_Ditting_1827

Instruction manual



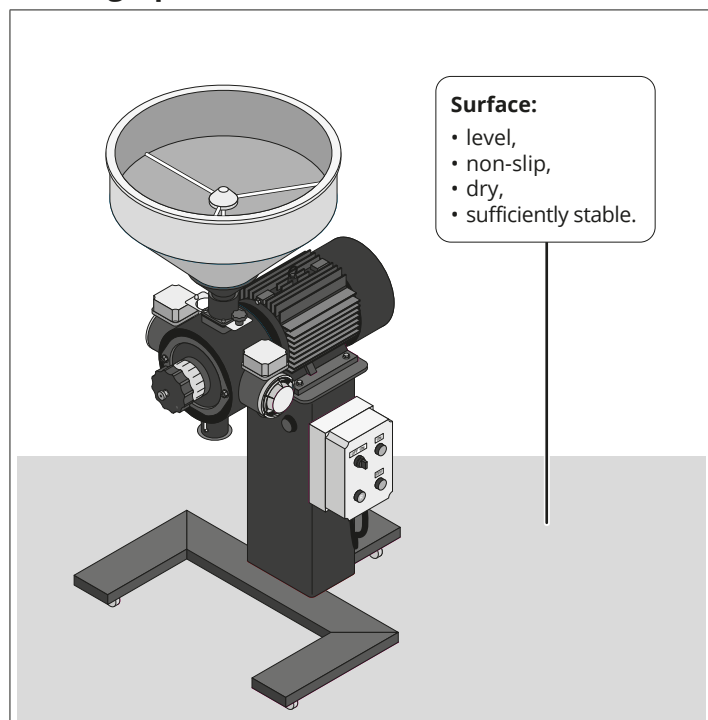
https://hemro.net_Ditting_1827_InstructionManual

Spare Parts

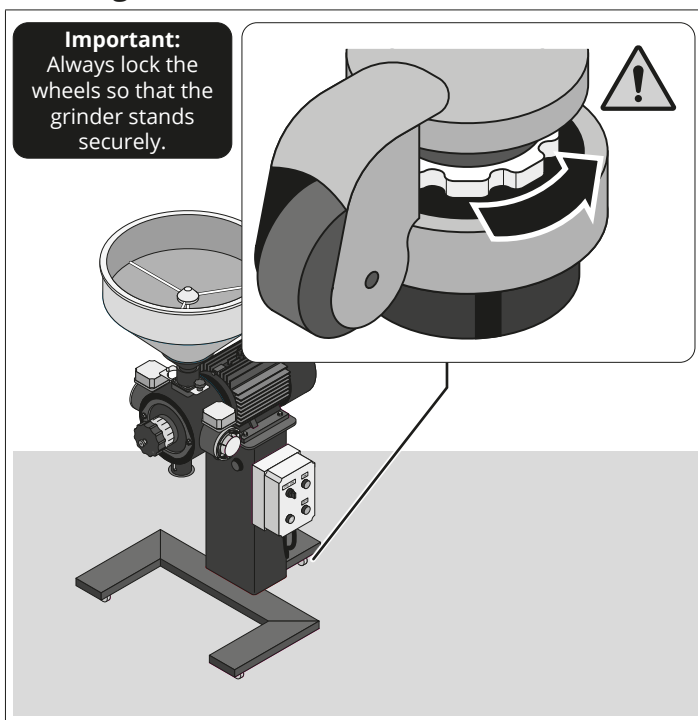


https://hemro.net_Ditting_1827_Spare_parts_list

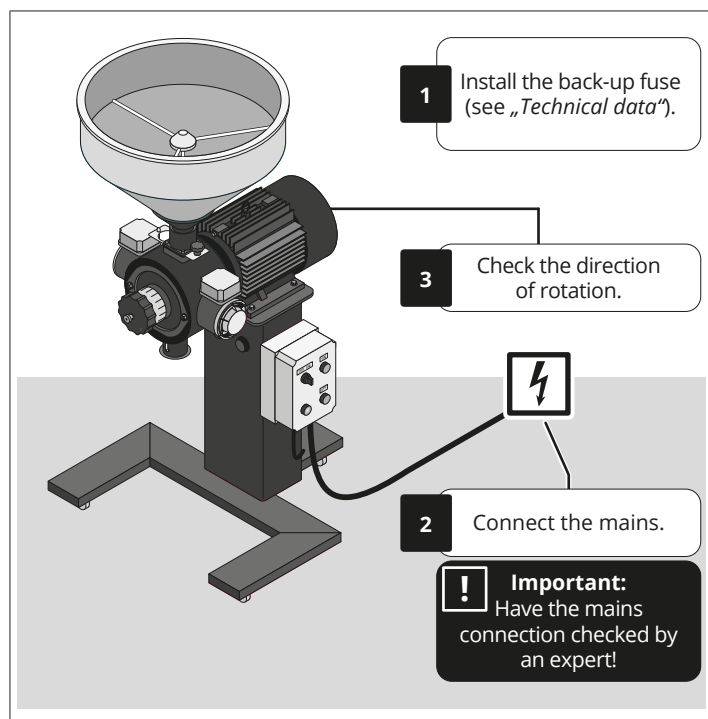
Setting Up The Grinder



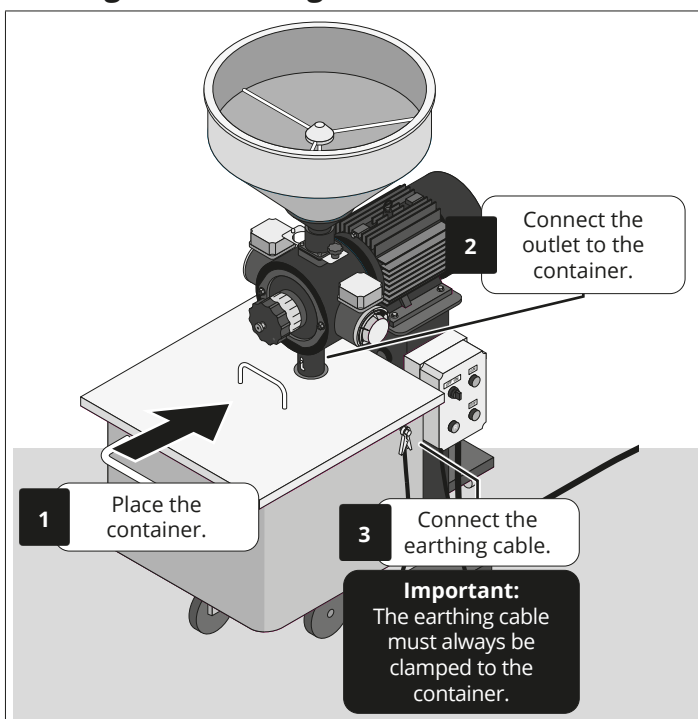
Locking The Wheels



Connect Grinder & Check Direction Of Rotation

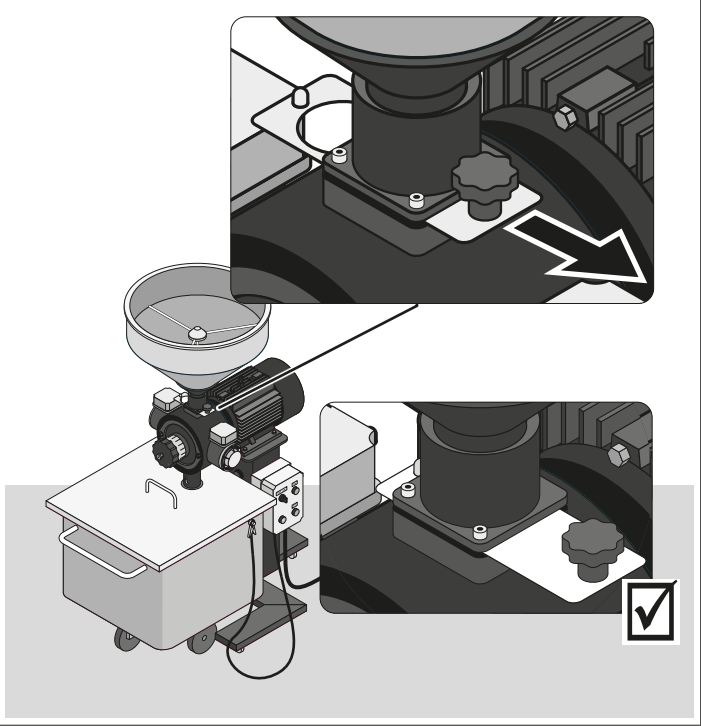
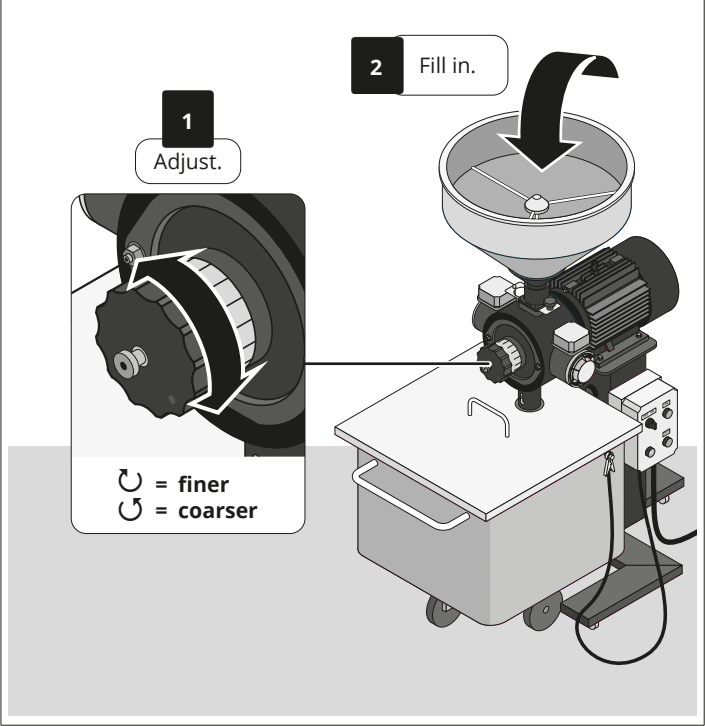


Placing & Connecting The Container



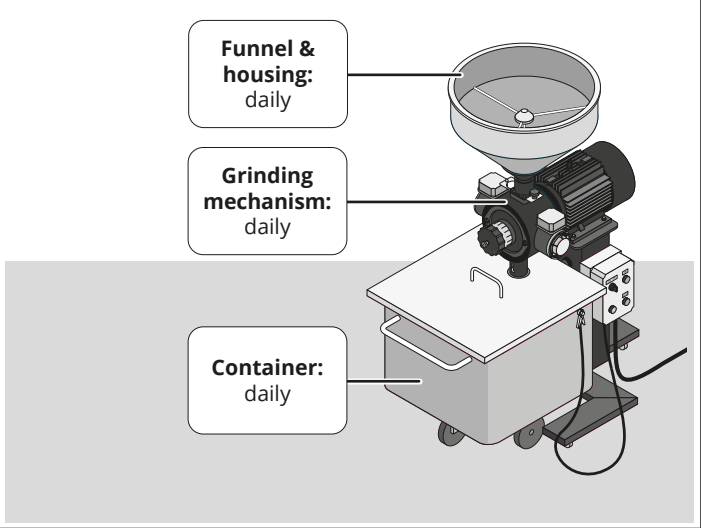
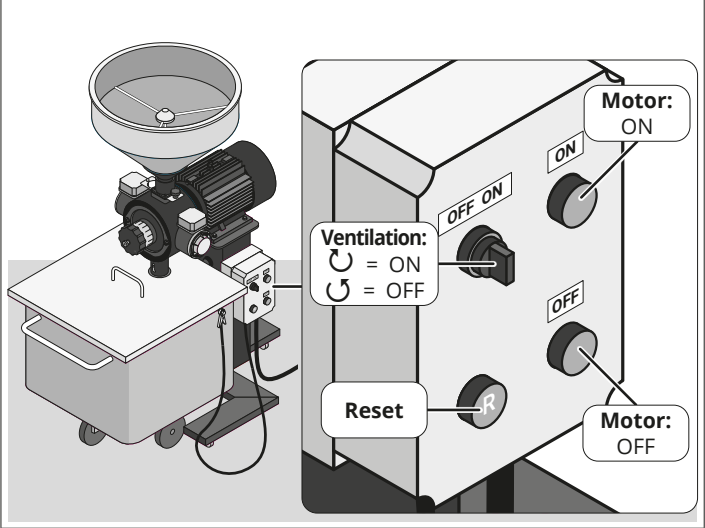
Adjusting The Grinding Degree & Adding The Beans

Opening The Slider



Switching On & Off

Regular Cleaning



Technical data

Model:		1827 High Volume		
Voltage frequency phase:		380–415 V 50 Hz 3~	380–415 V 60 Hz 3~	200–208 V 60 Hz 3~
Back-up fuse ¹ :		3 × 32 A-slow	3 × 32 A-slow	3 × 15 A-slow
Overcurrent circuit breaker:		set to 11 A	set to 11 A	set to 20 A
Idle speed (50 / 60 Hz):		1450 / 1750 rpm		
Sound emission value ² :		70 dBA		
Max. permitted operating cycle:		Continuous operation		
Dimensions (W × H × D):		790 × 1600 × 1230 mm		
Weight (net):		155 kg		
Funnel contents ³ :		70 l		
Filling quantity of container ³ :		200 l		

1) The required back-up fuses are not included in the scope of delivery.
2) The sound emission depends on the material being ground.
3) The bulk density of the ground material can be used to determine the fill weight.